

PRODUCT DETAIL SHEET

SPRAYROOMS, DRYING ROOMS, AIR HEATERS AND ENCLOSURES

Introduction

These enclosures offer the ideal controlled environment for your finishing, curing or drying requirements and prevent these processes from contaminating other areas. They can be designed to provide differing degrees of cleanliness, heating systems or air conditioning when required.

A spraybooth extraction system can be incorporated for paint spraying applications or a simpler extractor can be fitted when used as a drying enclosure.

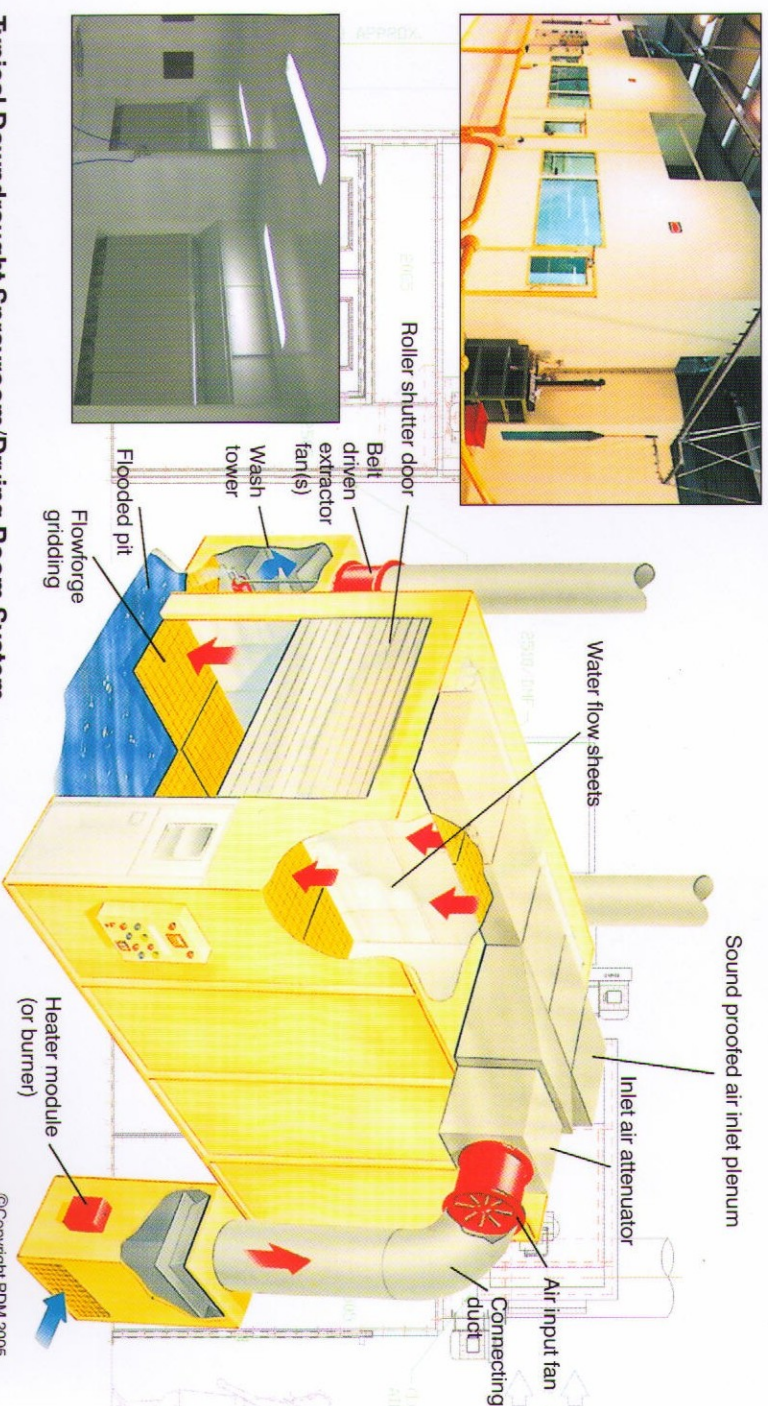
A fully automatic air recirculation system can be incorporated for the higher temperature curing applications.

Several rooms with different facilities can be interconnected to provide a 'suite' for preparations, finishing, and curing.

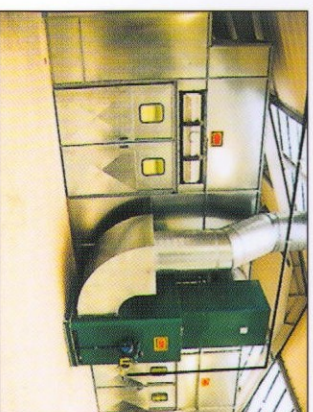
Standard options

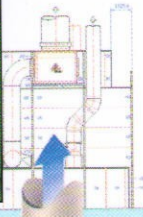
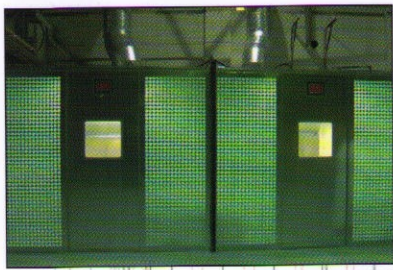
- Dryfilter or waterwash extraction systems
- Side wall extraction or downdraught air flow system with gridded floor
- Single skinned or double skinned insulated steel manufacture
- Galvanised or Stainless Steel or Painted surface finishes
- Filtered 'shop air' inlet system or Pressurised air replenishment or fully integrated heated air replacement system with controls
- Gas, electric, oil or steam heating mediums, direct or indirect
- Air conditioning system with cooling and humidity controls
- Roller or sliding shutter doors or swing doors
- Various light fittings and window systems

RDM sprayrooms and systems are designed utilising our unique "Modular System" to suit your specific requirements.

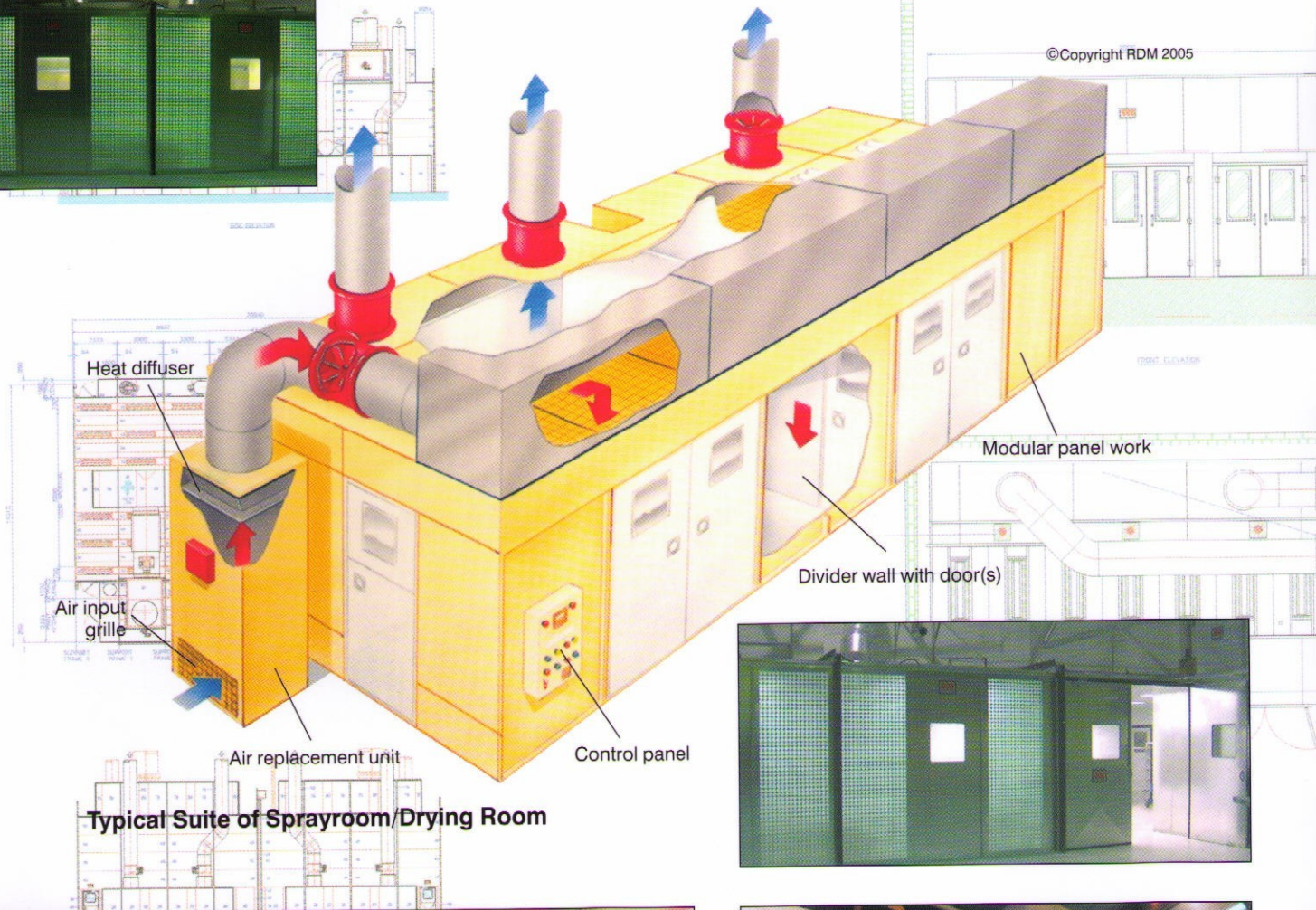


Typical Downdraught Sprayroom/Drying Room System

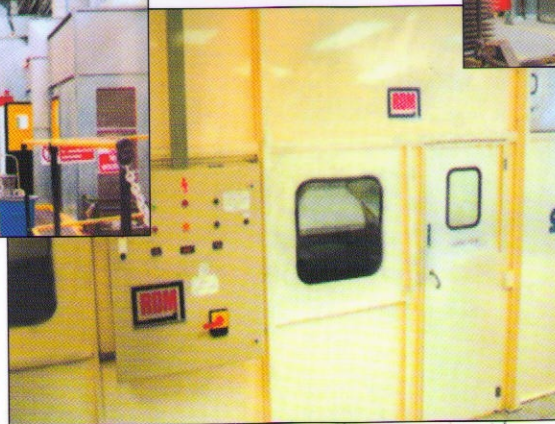
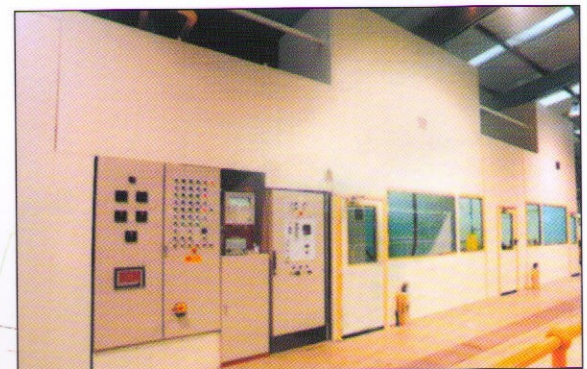


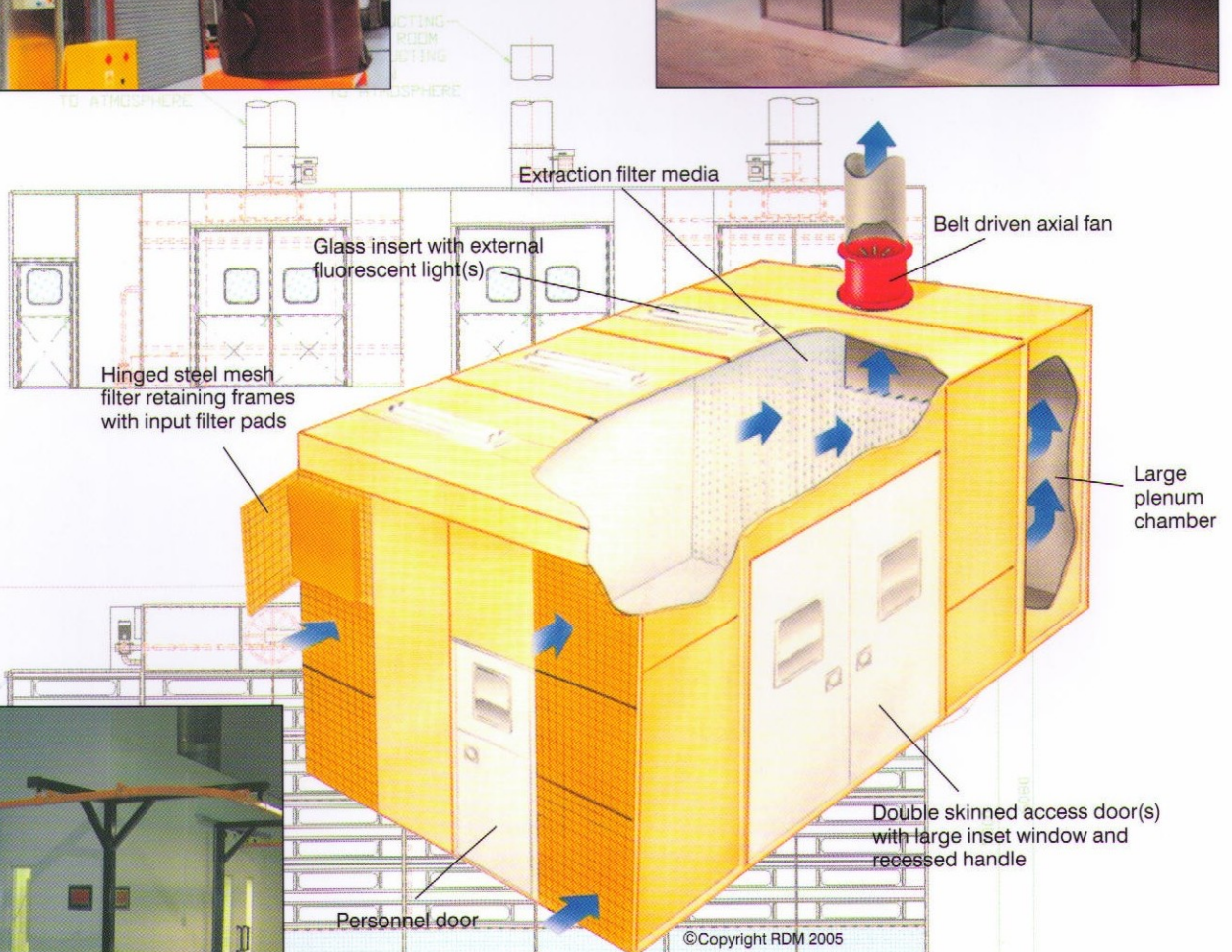
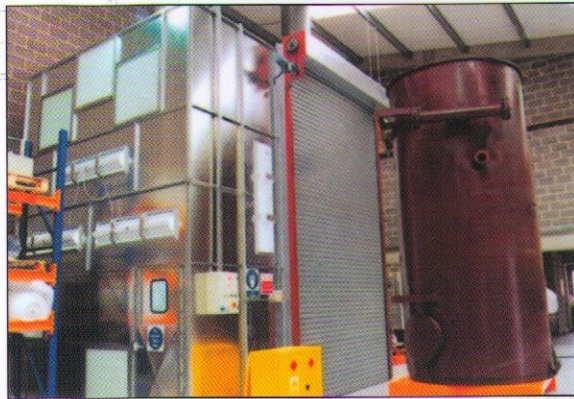
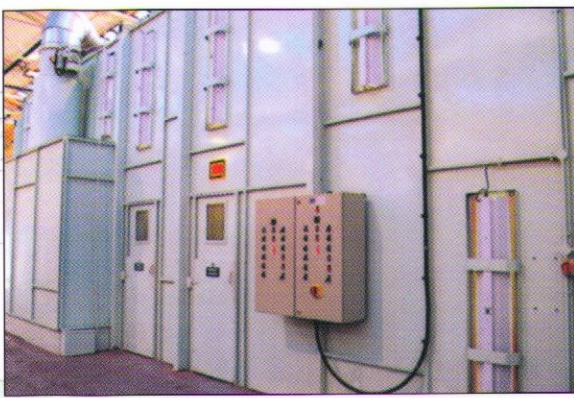


©Copyright RDM 2005

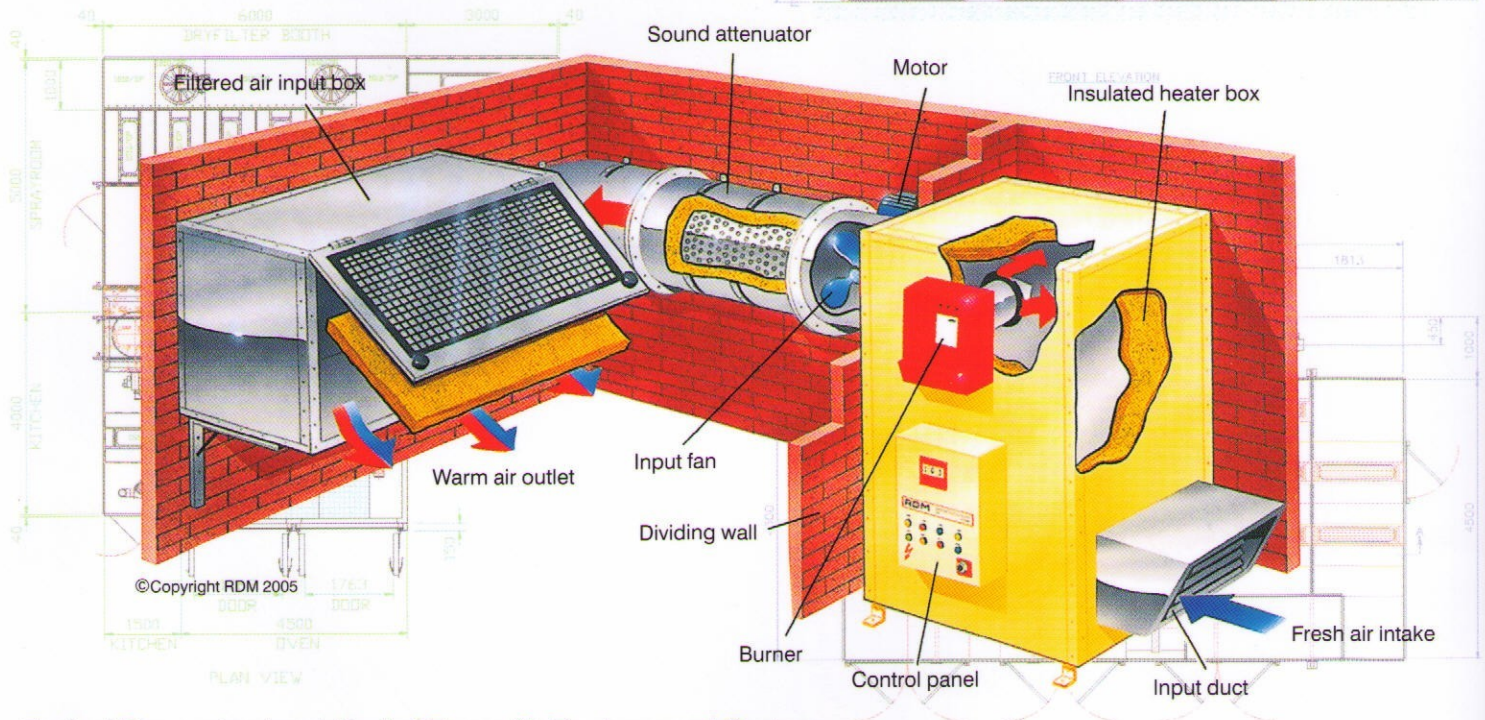
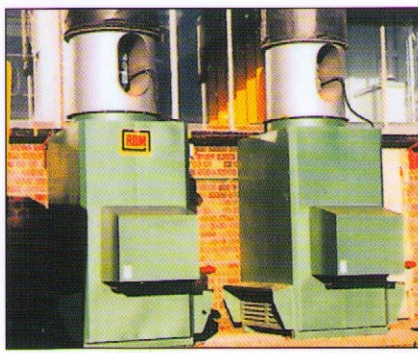


Typical Suite of Sprayroom/Drying Room





Typical Compact Sprayroom with End Extractions



Typical Pressurised and Heated Room Air Replacement System

Standard features

- Full 12 month warranty
- Substantial 18 swg/16 swg steel construction with sectional support steelwork suitably stiffened to allow maintenance operatives to stand on top
- Twin fluorescent light fittings mounted behind glass insert panels located on a sealant bead
- Air input filters sit in hinged steel mesh retaining frames and are of the roll type to reduce replacement costs
- Air input systems are lined with sound deadening foams
- All fuel heated plants conform to British Standards
- Heated plants are complete with full control panel system
- C.E. Approved

Control system

- Digital programmable temperature controller
- Electronic overtemperature device
- All gas controls to safety standards
- Pre-start purge and cool timers
- Motor controls and interlocks
- Air flow providing switch(es)
- Isolator and line fuses
- Status indicator lamps

Typical control options

- Electronic two speed spray/brake selector
- Solenoid safety system to shut spray guns off in recirculation modes
- Chart recorder
- Process timer with alarm

Notable users include: Aston Martin Lagonda. BAe Systems. Hallam Plastics. APPH Wichita. Prometals Latvia. Bredero Shaw. Weir Warman. Didsbury Engineering. Senator Furniture. Mitras Automotive. Millers Vanguard. Volvo UK. AGD Equipment. Boosey & Hawkes. Palm Automotive. Kier Construction. Sanko Gosei. Sanyo Gallenkamp. Glossop Caravans. David Brown Gears. Slingsby Aviation. Peter Brotherhood. Ifor Williams Trailers. Bradley Doublelock. Power Bronze. Vickers. Hycrome Europe. Magna Kansei. Bridport Aviation. Kodak Ltd. Jaguar Cars.

Product development is continuous and RDM reserve the right to make alterations in specification and manufacture without notice.
Products as delivered may therefore differ from that described in this document.

RDM INDUSTRIAL SERVICES LIMITED Stakehill Lane, Stakehill, Middleton, Manchester M24 2RY.
Tel: 0161 643 9333. Fax: 0161 655 3467. Email: sales@rdmengineering.co.uk