

# PRODUCT DETAIL SHEET



## POWDER COATING BOOTHS AND RECOVERY SYSTEMS

### Introduction

The RDM "Modular" Powder Coating Booth System is a World First. For the first time the customer can choose any size or style of work or operator openings to suit their needs and they only pay for a booth by its overall size. The use of CAD and flexible manufacturing has made this possible at an incredible price.

Customers can choose between a low cost galvanised finish, a superb epoxy powder coated finish or our top quality all stainless steel construction.

RDM manufactures a large range of high efficiency cyclones and powder afterfilters to suit different extraction duties.

The unit most closely matching the requirements of the system can be easily and simply chosen or specified.

### Questions and Answers

What is Powder Coating?

Powder coating is simply an alternative method of applying Paints. Unlike the 'normal' 'wet' Paint application, with Powder Paints there are no solvents. Only the Paint solid itself is sprayed onto the product, in a fine powder form. The Product is then heated (to around 200 degrees Centigrade) in an Oven, the powder fuses (or melts) onto the product and thus forms a smooth, tough and thick coating.

What are the benefits of Powder Coating?

High Quality. Because the powder is fused onto the product, it has excellent scratch resistance properties. It also has a pleasing 'smooth' appearance and forms a sealed skin minimising corrosion risk.

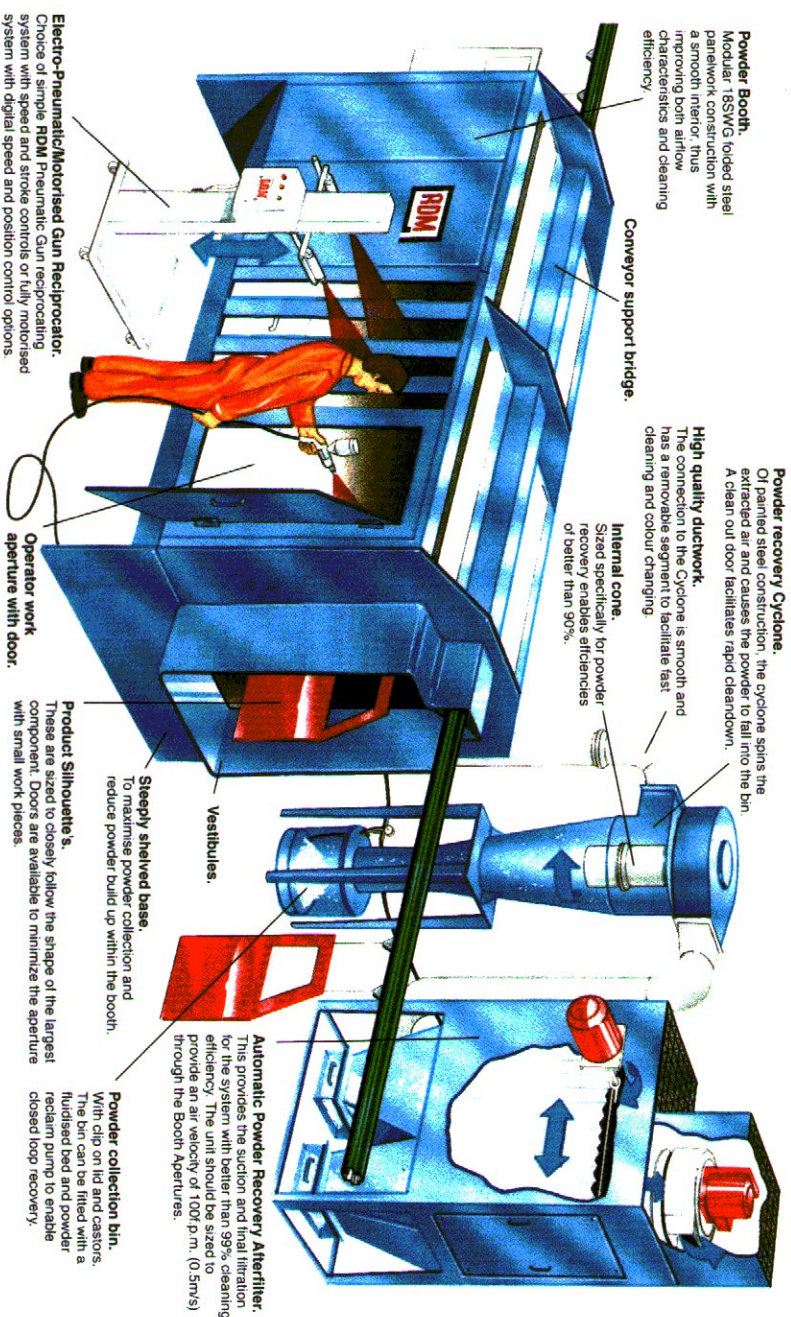
**Recoverable.** Unlike Wet paint, 'Over spray' powders can be collected and re-used! When you consider that in any paint spraying system, only around 50% of the paint (or powder) actually lands on the job, then large savings are clearly possible if the over spray can be re-used.

**Simple Automation.** Because powder is applied electrostatically, is fully recoverable and is easily cleaned away, powder is ideally suited to simple, automatic application thus minimising labour requirements.

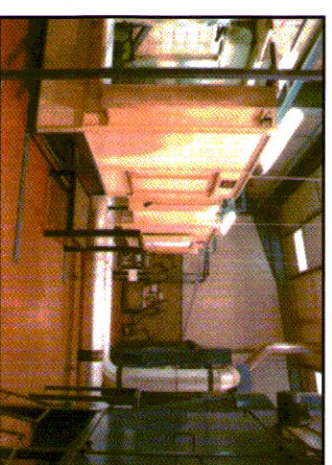
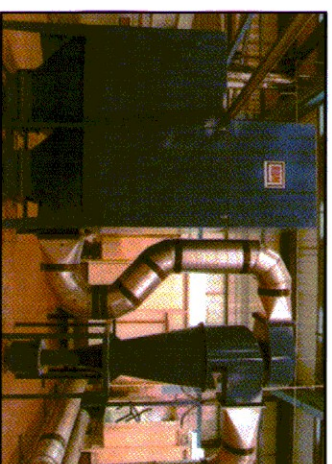
**One coat application.** For most applications, a single thick powder application is quite possible. This eliminates the need for primers, multi-coat-wet painting and for rubbing down between coats.

**No Solvents.** It is, therefore, safer to use and more 'environmentally friendly'. It also easily complies with the 1990 E.P.A. Legislation.

**Clean.** Spillages, overspray, etc., can literally be vacuumed away or brushed off!



© 2004 RDM Engineering



## Typical small manual system.

### Integrated Illumination.

Provided by glass inserts let into a reinforced roof panel with fluorescent light fittings and reflectors.

### Silencer housing.

Centrifugal fan. The Fan is in the Clean Filtered airstream.

### Explosion relief panel.

To prevent injury to Personnel this discharges vertically.

### Automatic Powder Recovery Afterfilter.

This provides the suction and final filtration for the system with better than 99% cleaning efficiency. The unit should be sized to provide an air velocity of 100f.p.m. (0.5m/s) through the Booth Apertures.

### Automatic shaker mechanism.

On Autoshake models this mechanism shakes the 'anti-static' bag filters at the end of the shift to loosen any stuck powder. This is automatically activated whenever the fans are stopped.

On Reverse jet models, the filters are cartridge pods which are cleared by pulses of compressed air. Reverse jet models are best suited to very heavy duty applications.

### Filter Bags / Cartridges.

Air to cloth ratio of 6:1, of heavy duty antistatic construction to provide many years of service.

### Full size access panels.

For simple maintenance.

### Large powder recovery bins.

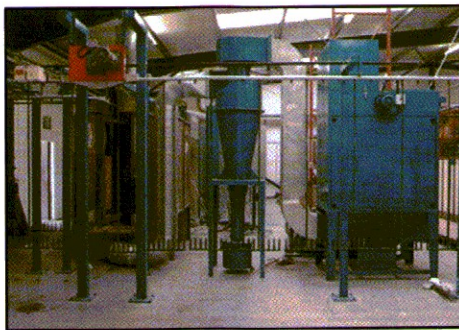
With slide rails to facilitate easy removal.

### Powder spray guns.

### Removable 'V' shaped air diffuser

This ensures even air and powder extraction.

© 2004 RDM Engineering



## What information do RDM need to quote for a Powder Coating System?

The **materials** your products are made of i.e., are they aluminium, mild or stainless steel, etc. The range of Sizes and Weights of the products to be sprayed, the largest, the commonest and the smallest products.

The **quantities** of these products to be coated, either hourly or daily, if possible.

The number of **different colours** to be sprayed. This is very important because this will tell us the most appropriate method of powder recovery.

The **quality** of finished required! This is also relevant because this will suggest to us the most appropriate method of pretreatment, for example, architectural aluminium needs to have a much better quality of finish than, for example, a packing bracket that may only be used for a matter of hours!

## KEY FEATURES

- ✓ All modular system
- ✓ Choice of construction materials
- ✓ Integral fluorescent lighting
- ✓ Choice of roll on/off system
- ✓ Smooth cyclones for infinite number of fast colour changes
- ✓ Cyclone more than 90%
- ✓ Afterfilters more than 99% efficient
- ✓ Easily removed powder bins
- ✓ Simple powder reclaim systems
- ✓ Antistatic filters
- ✓ Fan(s) in clean air stream
- ✓ Efficient pulse jet or shaker cleaning
- ✓ Automatic or manual versions
- ✓ 12 month warranty
- ✓ Full HSE compliance

**Notable users include:-** Channelmaster (U.K) Ltd. • Dale Power Plc. • Prima Doors • Stancraft • Eden MFG • Versatile Fittings • Metco • Trace Elliott • Allermuir Furniture • H.S.P. Beith • P.C.D. Products • Airedale • Orthokinetics • Metex • High Speed Piercing •

Product development is continuous and RDM reserve the right to make alterations in specification and manufacture without notice. Products as delivered may therefore differ from that described in this document.

### RDM INDUSTRIAL SERVICES LIMITED

Stakehill Lane, Stakehill, Middleton, Manchester M24 2RY.

Tel: 0161 643 9333. Fax: 0161 655 3467

[www.rdmengineering.co.uk](http://www.rdmengineering.co.uk)



Made in Great Britain



Prices Effective  
September 2008

# RDM ENGINEERING

Stakehill Lane, Stakehill, Middleton, Manchester, M24 2RY  
Email [sales@rdmengineering.co.uk](mailto:sales@rdmengineering.co.uk) Website: [www.rdmengineering.co.uk](http://www.rdmengineering.co.uk)  
TEL: 0161 643 9333 FAX: 0161 655 3467



## POWDER COATING BOOTHS AND RECOVERY SYSTEMS PRICE LIST AND DIMENSION DATA

### RDM 'MANUAL' POWDER COATING BOOTHS

MODEL	GALVANISED	POWDER COATED (€)	STAINLESS STEEL (€)
RMP 1	950	1150	1250
RMP 15	1010	1250	1550
RMP 2	1190	1540	1890
RMP 3	1580	1990	2900

Any other size can be supplied. Prices on request.

### RDM 'AUTO' POWDER COATING BOOTHS

MODEL	GALVANISED (€)	POWDER COATED (€)	STAINLESS STEEL (€)
RAP 2	1890	3200	4500
RAP 3	2200	3500	4900
RAP 4	2600	3900	5980
RAP 5	2900	4210	6850

Any other size can be supplied . Prices on request.  
All booths complete with sealed grass inserts and lights

#### OPTIONS:-

Kit for roll on/off operation includes 'v' wheels £1250  
Additional Auto Gun slots. Per pair £260  
Work aperture door (each) £320

Booths are supplied in kit form. Assembly or installation is at extra cost.

### RDM QUICK CHANGE CYCLONES

MODEL	VOLUME CFM	PRICE (€)
RC400	1000	2250
RC500	1000 - 2250	2490
RC600	2250 - 3000	2687
RC750	3000 - 4000	3260
RC900A	4000 - 5000	4280
RC900B	7000	4360

### RDM REVERSE JET CARTRIDGE FILTER UNITS WITH POLYESTER FILTERS AND SEQUENCE CONTROLLER

MODEL	VOLUME CFM	MOTOR kW	PRICE (€)
RJ4	1000	3	5740
RJ6	1500	4	6678
RJ8	2000	5.5	7813
RJ12	3000	7.5	8812
RJ16	4000	7.5	10260
RJ20	5000	11	12490
RJ24	6000	15	14760
RJ36	9000	22	18430

Other sizes available. Please ask.

### RDM AUTO SHAKE AFTERFILTERS WITH ANTI-STATIC BAGS

MODEL	VOLUME CFM	MOTOR kW	PRICE (€)
RA125	750	2.2	2950
RA175	1050	3	3280
RA250	1500	4	3870
RA375	2250	5.5	4790
RA500	3000	7.5	5460
RA600	3600	7.5	6236
RA750	4500	11	8667
RA1000	6000	15	9590
RA1500	9000	22	14560

Other sizes available. Please ask.

### INTERCONNECTING DUCTWORKS KITS

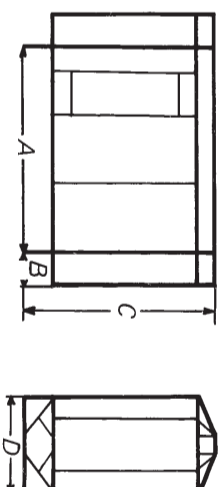
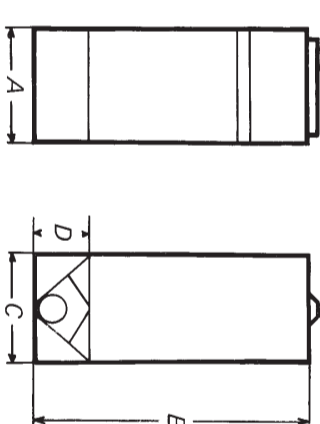
MAXIMUM CFM	"SMOOTH" BOOTH TO CYCLONE(€)	"SPIRAL" CYCLONE TO AFTERFILTER(€)
1000	800	250
1500	850	260
2250	900	300
3000	950	320
4500	1050	330
6000	1120	380
9000	1280	500

**NOTE:-** All prices on this leaflet are for supply only. We would be pleased to quote for installation and/or delivery as required.

**PRICES:-** Prices do not include VAT, this will be charged extra.

**PAYMENT TERMS:-** 25% deposit with order. Balance due on satisfactory completion of installation, payable to driver or site foreman (non-account customers). Any other terms will be negotiated with RDM.

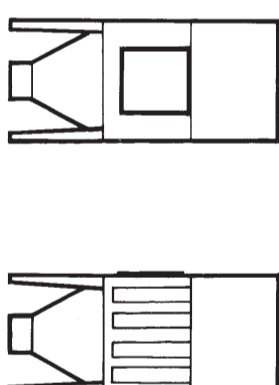
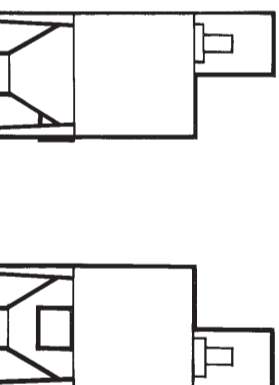
**WARRANTY:-** 12 months on all non wearing parts from date of installation.



RDM MANUAL POWDER BOOTHS				
MODEL	WIDTH 'A'	HEIGHT 'B'	DEPTH 'C'	BASE 'D'
RMP 1	1000	UP TO 3000	UP TO 1500	UP TO 500
RMP 15	1500	UP TO 3000	UP TO 1500	UP TO 500
RMP 2	2000	UP TO 3000	UP TO 2000	UP TO 1000
RMP 3	3000	UP TO 3000	UP TO 2000	UP TO 1000

RDM AUTOMATIC POWDER BOOTHS				
MODEL	LENGTH 'A'	VESTIBULE 'B'	HEIGHT 'C'	DEPTH 'D'
RAP 2	2000	500	2000	1000 TO 1500
RAP 3	3000	500	2500	1000 TO 1500
RAP 4	4000	500	3000	UP TO 2000
RAP 5	5000	500	3000	UP TO 2000

RDM CYCLONES					
MODEL	VOLUME CFM	OVERALL HEIGHT OF CYCLONE	FOOTPRINT SIZE OF CYCLONE	INLET SIZE	OUTLET SIZE
RC500	1000 - 2250	198.5	710 x 710	113 x 325	228 x 305
RC600	2250 - 3000	229	710 x 710	152 x 362	305 x 457
RC750	3000 - 4000	286	710 x 710	152 x 430	305 x 457
RC900A	5000	354	710 x 710	206 x 562	305 x 457
RC900B	7000	354	710 x 710	206 x 562	457 x 457



RDM AUTOSHAKE AFTERFILTERS					
MODEL	VOLUME CFM	MOTOR KW	OVERALL HEIGHT OF AFTERFILTER	FOOTPRINT SIZE OF AFTERFILTER	INLET SIZE
RA125	750	2.2	2864	632 x 784	305 x 152
RA175	1050	3	2914	632 x 1045	305 x 152
RA250	1500	4	2914	750 x 1045	305 x 228
RA375	2250	5.5	2914	1065 x 1045	305 x 228
RA500	3000	7.5	2914	1385 x 1045	457 x 305
RA600	3600	7.5	3516	1535 x 1045	457 x 305
RA750	4500	11	3116	2130 x 1045	457 x 305
RA1000	6000	15	3116	2770 x 1045	457 x 457

RDM REVERSE JET CARTRIDGE FILTERS					
MODEL	VOLUME CFM	MOTOR KW	OVERALL HEIGHT OF CARTRIDGE FILTER	FOOTPRINT SIZE OF AFTERFILTER	INLET SIZE
RJ4	1000	3	3400	800 x 980	300 x 150
RJ6	1500	4	3400	800 x 1330	600 x 150
RJ8	2000	5.5	3400	1500 x 980	600 x 150
RJ12	3000	7.5	3400	1150 x 1820	800 x 150
RJ16	4000	7.5	3400	1500 x 1820	700 x 280
RJ20	5000	11	3400	1850 x 1820	700 x 280
RJ24	6000	11	3400	2200 x 1820	1100 x 320

#### NOTES:-

It should be noted that RDM make the powder booths to suit the individual customer's requirement. This offers total choice and flexibility for you the customer. The model name is intended to indicate only the overall size of the booth and as such the price of the booth. To select the suitably sized cyclone/afterfilter combination it is necessary to calculate the total booths aperture sizes. Once the total square footage figure is known, this should be multiplied by 100 to give the correct recovery unit rating in C.F.M. (cubic foot per minute).

All dimensions are in mm.